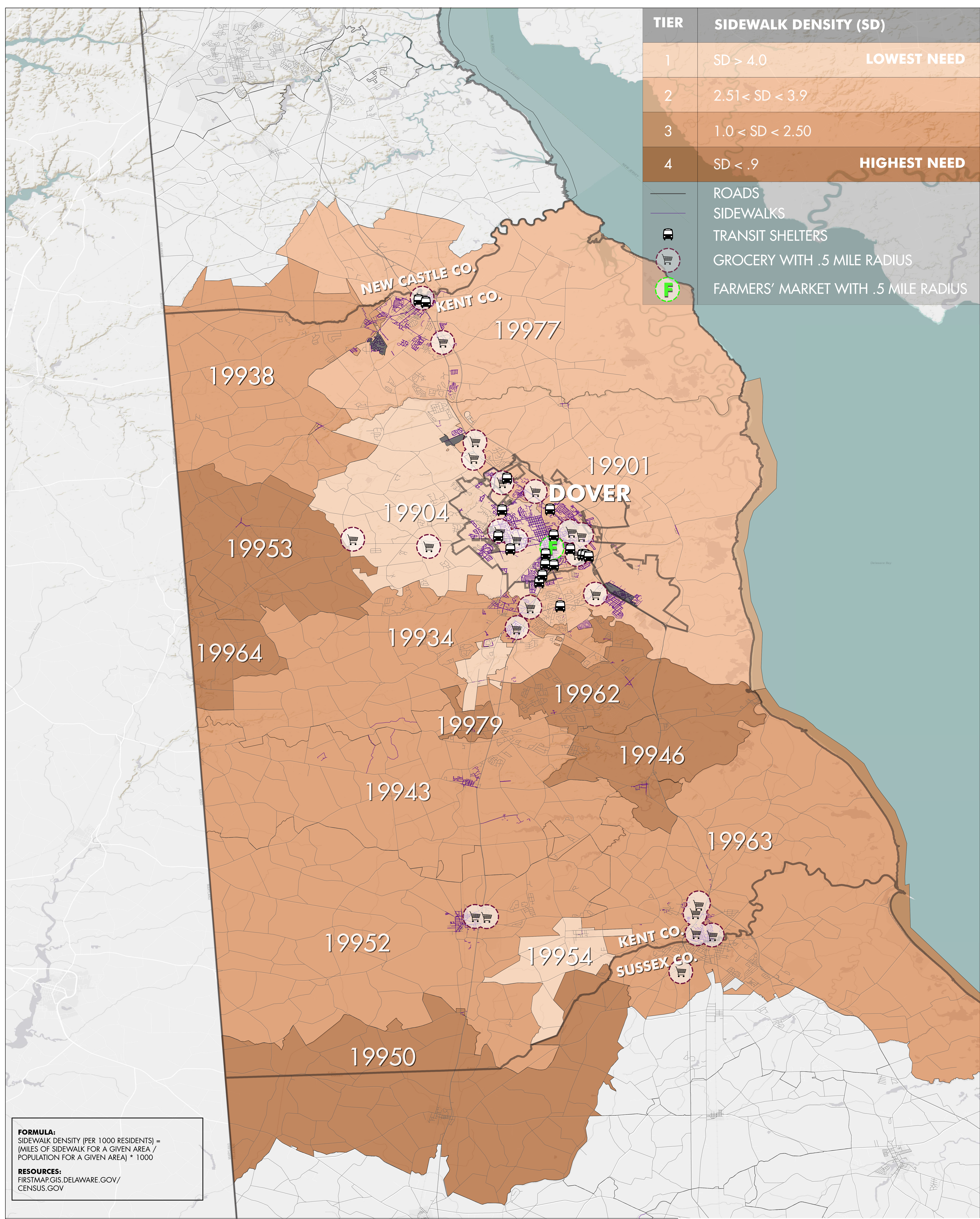


TIER	SIDEWALK DENSITY (SD)	
1	SD > 4.0	LOWEST NEED
2	2.51 < SD < 3.9	
3	1.0 < SD < 2.50	
4	SD < .9	HIGHEST NEED
 ROADS  SIDEWALKS  TRANSIT SHELTERS  GROCERY WITH .5 MILE RADIUS  FARMERS' MARKET WITH .5 MILE RADIUS		



FORMULA:
 SIDEWALK DENSITY (PER 1000 RESIDENTS) =
 (MILES OF SIDEWALK FOR A GIVEN AREA /
 POPULATION FOR A GIVEN AREA) * 1000

RESOURCES:
 FIRSTMAP.GIS.DELAWARE.GOV/
 CENSUS.GOV

SIDEWALK DENSITY

PLAN4HEALTH KENT COUNTY, DE

