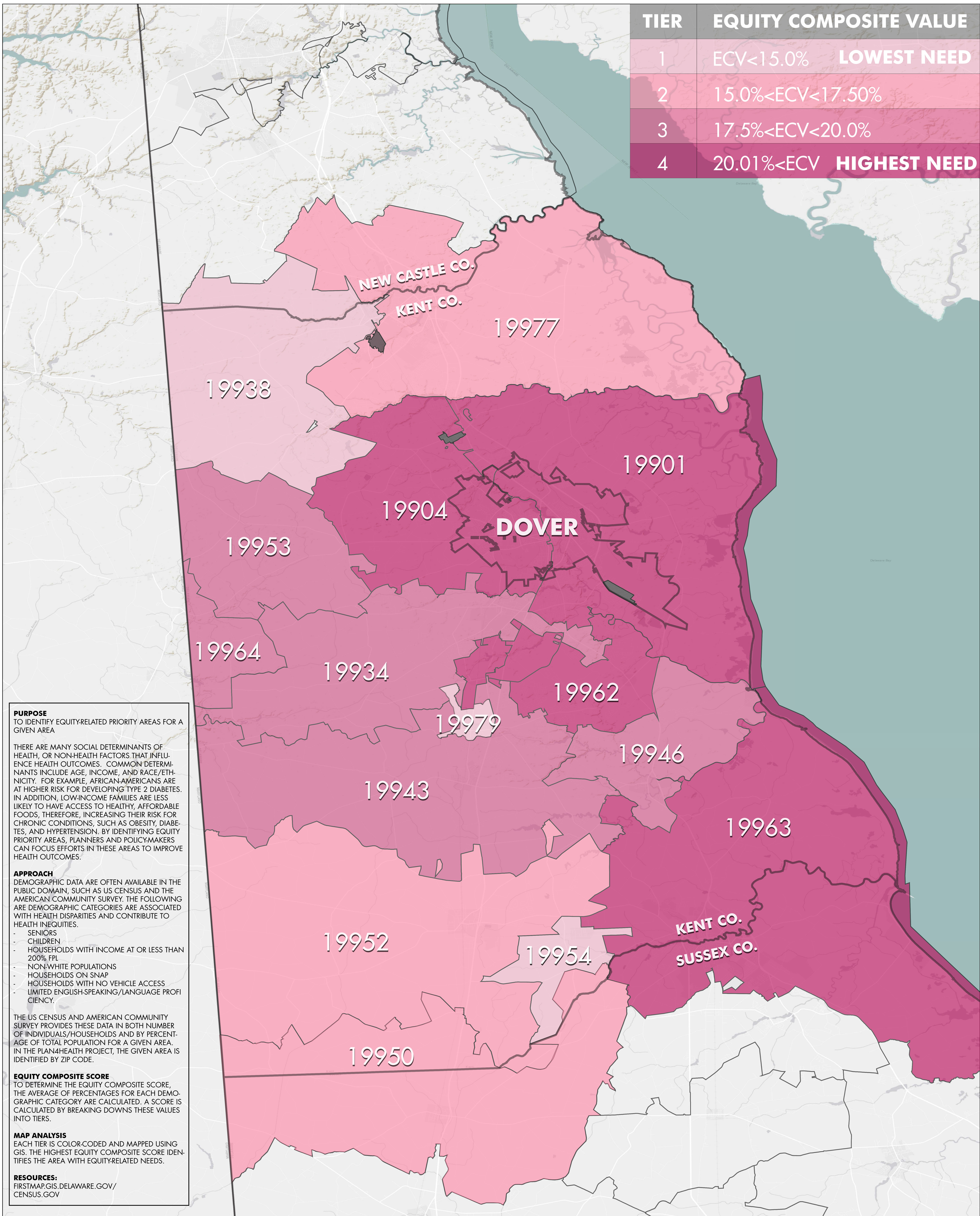


TIER	EQUITY COMPOSITE VALUE	
1	ECV < 15.0%	LOWEST NEED
2	15.0% < ECV < 17.50%	
3	17.5% < ECV < 20.0%	
4	20.01% < ECV	HIGHEST NEED



PURPOSE
TO IDENTIFY EQUITY-RELATED PRIORITY AREAS FOR A GIVEN AREA

THERE ARE MANY SOCIAL DETERMINANTS OF HEALTH, OR NON-HEALTH FACTORS THAT INFLUENCE HEALTH OUTCOMES. COMMON DETERMINANTS INCLUDE AGE, INCOME, AND RACE/ETHNICITY. FOR EXAMPLE, AFRICAN-AMERICANS ARE AT HIGHER RISK FOR DEVELOPING TYPE 2 DIABETES. IN ADDITION, LOW-INCOME FAMILIES ARE LESS LIKELY TO HAVE ACCESS TO HEALTHY, AFFORDABLE FOODS, THEREFORE, INCREASING THEIR RISK FOR CHRONIC CONDITIONS, SUCH AS OBESITY, DIABETES, AND HYPERTENSION. BY IDENTIFYING EQUITY PRIORITY AREAS, PLANNERS AND POLICY-MAKERS CAN FOCUS EFFORTS IN THESE AREAS TO IMPROVE HEALTH OUTCOMES.

APPROACH
DEMOGRAPHIC DATA ARE OFTEN AVAILABLE IN THE PUBLIC DOMAIN, SUCH AS US CENSUS AND THE AMERICAN COMMUNITY SURVEY. THE FOLLOWING ARE DEMOGRAPHIC CATEGORIES ASSOCIATED WITH HEALTH DISPARITIES AND CONTRIBUTE TO HEALTH INEQUITIES.

- SENIORS
- CHILDREN
- HOUSEHOLDS WITH INCOME AT OR LESS THAN 200% FPL
- NON-WHITE POPULATIONS
- HOUSEHOLDS ON SNAP
- HOUSEHOLDS WITH NO VEHICLE ACCESS
- LIMITED ENGLISH-SPEAKING/LANGUAGE PROFICIENCY.

THE US CENSUS AND AMERICAN COMMUNITY SURVEY PROVIDES THESE DATA IN BOTH NUMBER OF INDIVIDUALS/HOUSEHOLDS AND BY PERCENTAGE OF TOTAL POPULATION FOR A GIVEN AREA. IN THE PLAN4HEALTH PROJECT, THE GIVEN AREA IS IDENTIFIED BY ZIP CODE.

EQUITY COMPOSITE SCORE
TO DETERMINE THE EQUITY COMPOSITE SCORE, THE AVERAGE OF PERCENTAGES FOR EACH DEMOGRAPHIC CATEGORY ARE CALCULATED. A SCORE IS CALCULATED BY BREAKING DOWN THESE VALUES INTO TIERS.

MAP ANALYSIS
EACH TIER IS COLOR-CODED AND MAPPED USING GIS. THE HIGHEST EQUITY COMPOSITE SCORE IDENTIFIES THE AREA WITH EQUITY-RELATED NEEDS.

RESOURCES:
FIRSTMAP.GIS.DELAWARE.GOV/
CENSUS.GOV

EQUITY COMPOSITE MAP

PLAN4HEALTH KENT COUNTY, DE

