
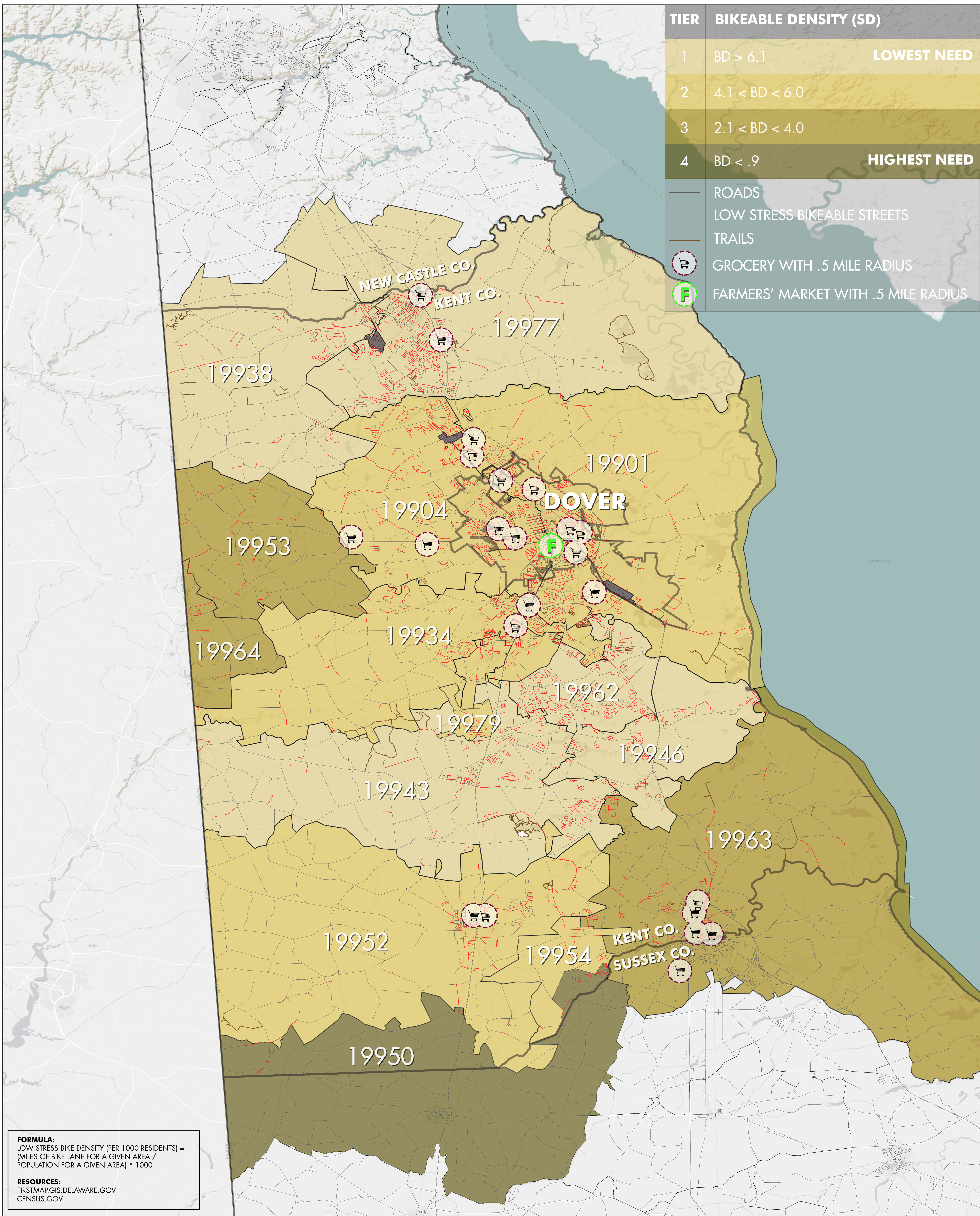


TIER	BIKEABLE DENSITY (SD)	
1	BD > 6.1	LOWEST NEED
2	4.1 < BD < 6.0	
3	2.1 < BD < 4.0	
4	BD < .9	HIGHEST NEED

	ROADS
	LOW STRESS BIKEABLE STREETS
	TRAILS
	GROCERY WITH .5 MILE RADIUS
	FARMERS' MARKET WITH .5 MILE RADIUS



**FORMULA:**  
 LOW STRESS BIKE DENSITY (PER 1000 RESIDENTS) =  
 (MILES OF BIKE LANE FOR A GIVEN AREA /  
 POPULATION FOR A GIVEN AREA) \* 1000

**RESOURCES:**  
 FIRSTMAP.GIS.DELAWARE.GOV  
 CENSUS.GOV

**BIKEABLE DENSITY**  
 PLAN4HEALTH KENT COUNTY, DE

